

LK FUGA®

Lauritz Knudsen 

Design, quality and Denmark's widest range



Life Is On | 

## Table of contents

3	History
4	Design
11	Quality
12	Production
14	Environmental documentation
15	Intelligent systems
16	Installation
17	Cover designer
18	Range
26	Buildings

LK FUGA®

## World-class Danish design

LK FUGA® is a small switch with a big story. The switch is smaller than any you'll find abroad. Exclusive materials with a matt and understated surface. The shape is sleek and minimalist. The function is self-explanatory.

Since Jørgen Juhl designed the very first LK FUGA® switch in the 1980s, LK FUGA® has written itself into design history on a par with world-famous Danish design furniture.

“

**LK FUGA® is an example of how even the most everyday Danish household items have become an iconic design classic.**

Jasper Morrison, WALLPAPER 2022

[Read more](#)



LK FUGA®

# BASELINE 50

## The original

LK FUGA® BASELINE 50 is the very first frame design Jørgen Juhl designed in the FUGA® ranges. And it's won a number of national and international awards. BASELINE 50 is available in white, light grey and coke grey – and with a frame in the colour metallic steel.

[Read more about BASELINE 50 at lk.dk](http://lk.dk)

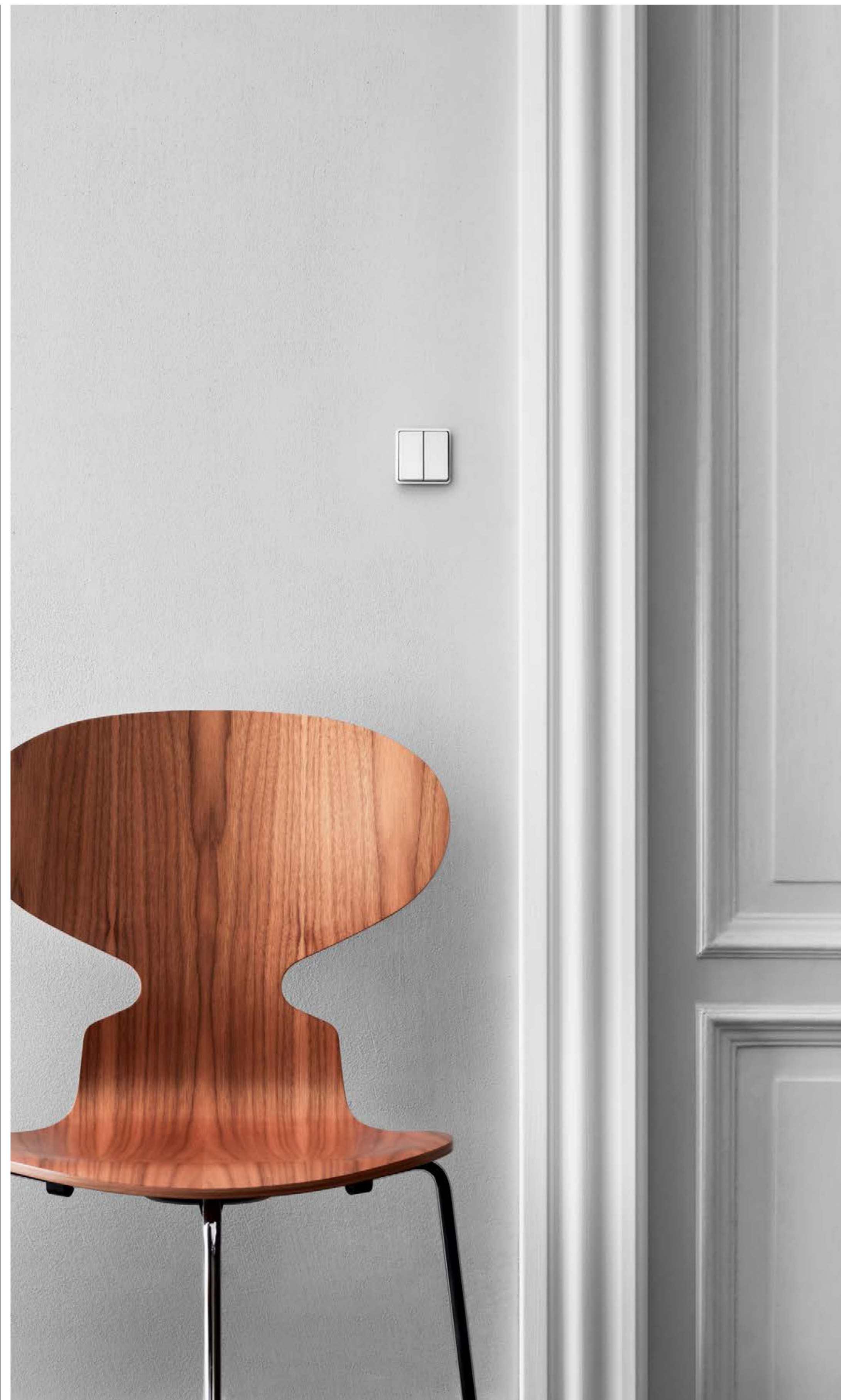


White

Light grey

Coke grey

White / Steel  
metallic frame



LK FUGA®

## BASE 63

### The classic

LK FUGA® BASE 63 is the simple and classic design solution that never goes out of fashion. It is also one of our most popular design frames. BASE 63, also designed by Jørgen Juhl in the 1980s, is available in white, coke grey and light grey.

[Read more about BASE 63 at lk.dk](https://lk.dk)



White



Coke grey



Light grey



LK FUGA®

# SOFT

## The rounded

LK FUGA® SOFT is a further development of BASE 63. The soft and rounded design gives the switch extra style. SOFT is available in white, light grey, coke grey and steel metallic.

[Read more about SOFT at lk.dk](http://lk.dk)



White    Light grey    Coke grey    Steel metallic



LK FUGA®

# CHOICE

## The creative

Six different colours/patterns are included with LK FUGA® CHOICE. That allows the user to give each switch a look that matches the style of each room. Users can also create their own unique design – or inset a piece of the wallpaper in the frame.

[Read more about CHOICE at lk.dk](http://lk.dk)



Life Is On | Schneider Electric



LK FUGA®

# PURE

## The exclusive

With frames in glass or steel, LK FUGA® PURE is the elegant and exclusive switch. PURE, designed by Holscher Design, is available in white, black and steel – and in a combination of black and white.

[Read more about PURE at lk.dk](http://lk.dk)



White      Black/Coke grey      Steel/Coke grey      Black/White





LK FUGA®

# SLIM

## The minimalist

LK FUGA® SLIM has the most minimalist design. The design is simple and discreet: SLIM protrudes only 5 mm from the wall. This is possible thanks to most of the installation being inside the installation box. SLIM, a further development of BASELINE 50, is designed by Jasper Morrison and is available in white, coke grey and with a steel frame. in white, coke grey and with a steel frame.

[Read more about SLIM at lk.dk](https://www.lk.dk)



White



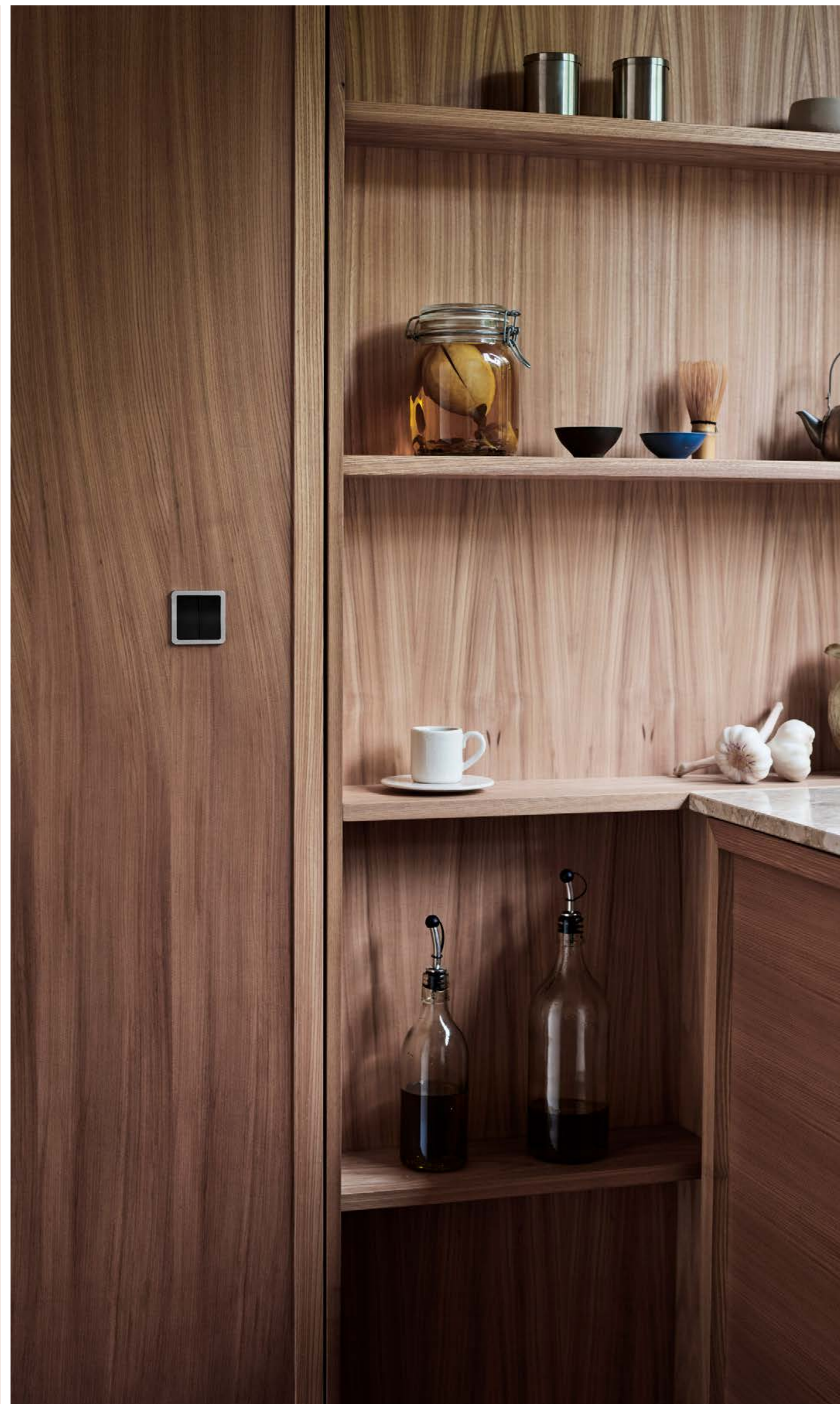
Coke grey



Steel/White



Steel/coke grey



# LK FUGA®

## Design frames are the icing on the cake when choosing style

Design frames make it easy to choose a style that matches your home's décor. And the simple click system between the mounting frame and the design frames makes it easy to change your look.



LK FUGA® SLIM  
Steel frame



LK FUGA® PURE  
White



LK FUGA® BASE 63  
Coke grey



LK FUGA® SOFT  
Coke grey



LK FUGA® CHOICE  
Red



LK FUGA® BASELINE 50  
White

LK FUGA®

## The most reliable and proven switch range

LK FUGA® switches are found in most Danish homes, and many of them have been there for 20, 30, or even 40 years. And with good reason: No other switch range has been as thoroughly tested as LK FUGA® – and most LK FUGA® products also come with a 20-year warranty\*. That's why LK FUGA® is a rock-solid solution for you and your customers – both for new builds and renovations.

LK FUGA® – Design. Quality. Safety.

[Read more](#)



LK FUGA®

## Made in Ringsted

More than 10 million LK FUGA® components are produced annually.

LK FUGA® components are produced at our factory in Ringsted

We run a "smart factory", where robotics and artificial intelligence are used to control production, reduce energy consumption and carbon emissions.

Having the factory in Denmark is a big advantage. Product development takes place close to the market, making it easier to manage product quality and security of supply. What's more, short transportation routes to customers result in a lower carbon footprint.



Our "smart factory" in Ringsted employs around 230 people.



## We want to contribute more and pollute less

In 2005, we were one of the first in the industry to start measuring our impact on the environment, climate and people. Since then, we've invested in developing products that minimise the impact on the environment in terms of development, production and (re)use.

### LK FUGA® is Cradle to Cradle® – certified

The recyclability of LK FUGA® materials is a high priority, and a large proportion of components now contain up to 85% recycled materials. Combined with several other initiatives, this means that some of the most popular LK FUGA® products have achieved Cradle to Cradle bronze certification. Cradle to Cradle Certified® is an internationally recognised product standard administered by the independent non-profit organisation Cradle to Cradle Products Innovation Institute.

[Read more about the certification here](#)

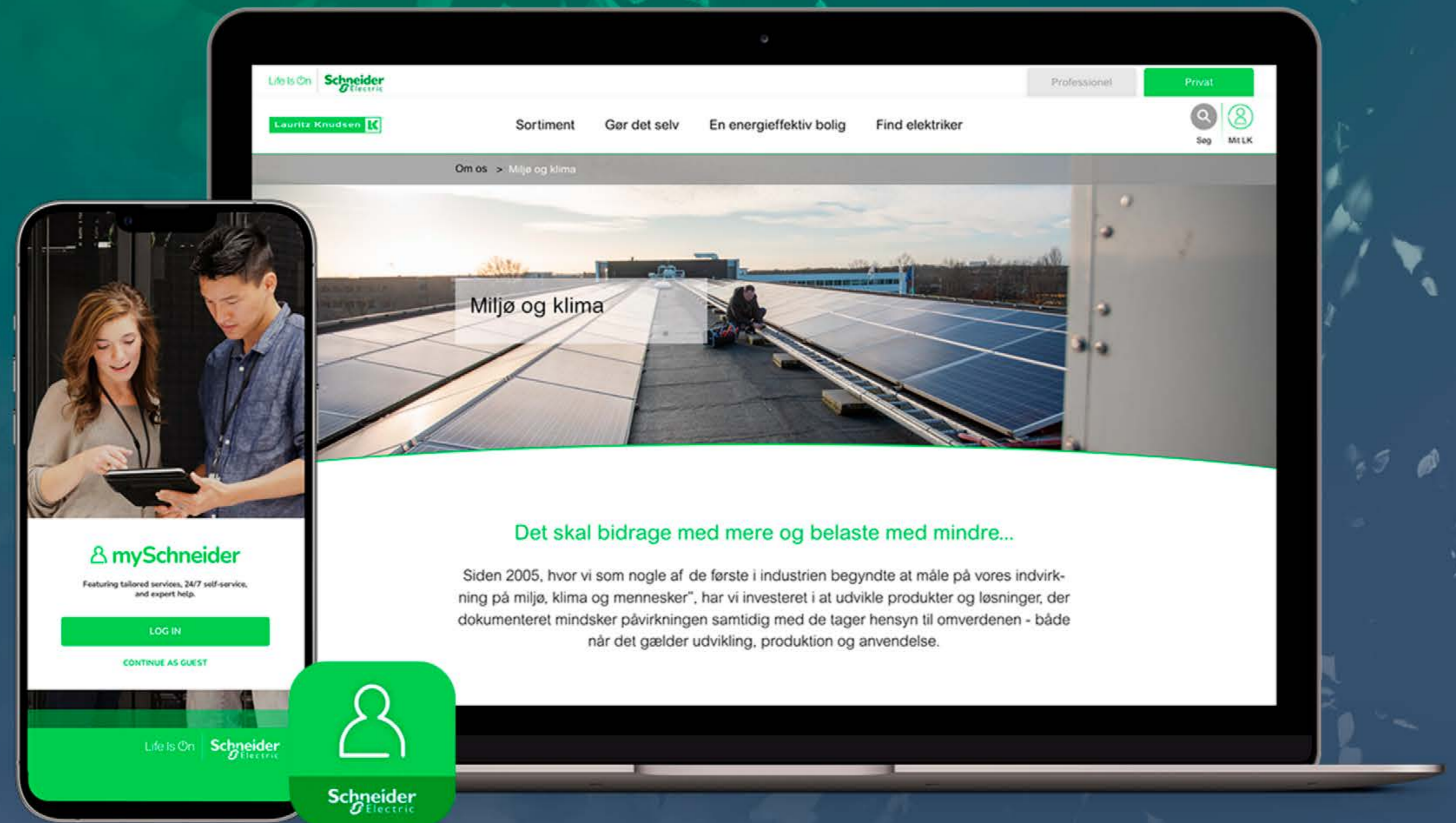


LK FUGA®

## Easy access to environmental documentation

Environmental and climate documentation is crucial in the construction industry

That's why we also offer easy access to climate and environmental information on our LK FUGA® products. All environmental documentation can be downloaded either via the [My Schneider app](#) or [our website](#).




LK FUGA®


## LK FUGA® is also intelligent, energy efficient and future-proof

LK FUGA® is compatible with intelligent systems within building automation, Wiser™ and KNX SpaceLogic. That means both systems can easily be installed directly in an LK FUGA® installation, making it simple to connect a classic wired solution with a smarter solution – while still getting a uniform and stylish look.

Read more about our intelligent systems for homes and buildings here:



**Wiser™**  
Wiser™ is a wireless system that helps make homes smarter and more energy efficient.  
[Read more here.](#)



**KNX SpaceLogic**  
KNX SpaceLogic is a building automation system specially designed for larger buildings, focusing on comfort and energy efficiency.  
[Read more here.](#)



## It's easy to install LK FUGA®

The LK FUGA® AIR installation box and technical mounting frame were launched in 2016. Both have made the installation of LK FUGA® more simple and stable. If you're renovating existing installations with old boxes, it's still possible to simply replace the frame and insert.

[Read more about installation here](#)

The LK FUGA® AIR installation consists of five components:

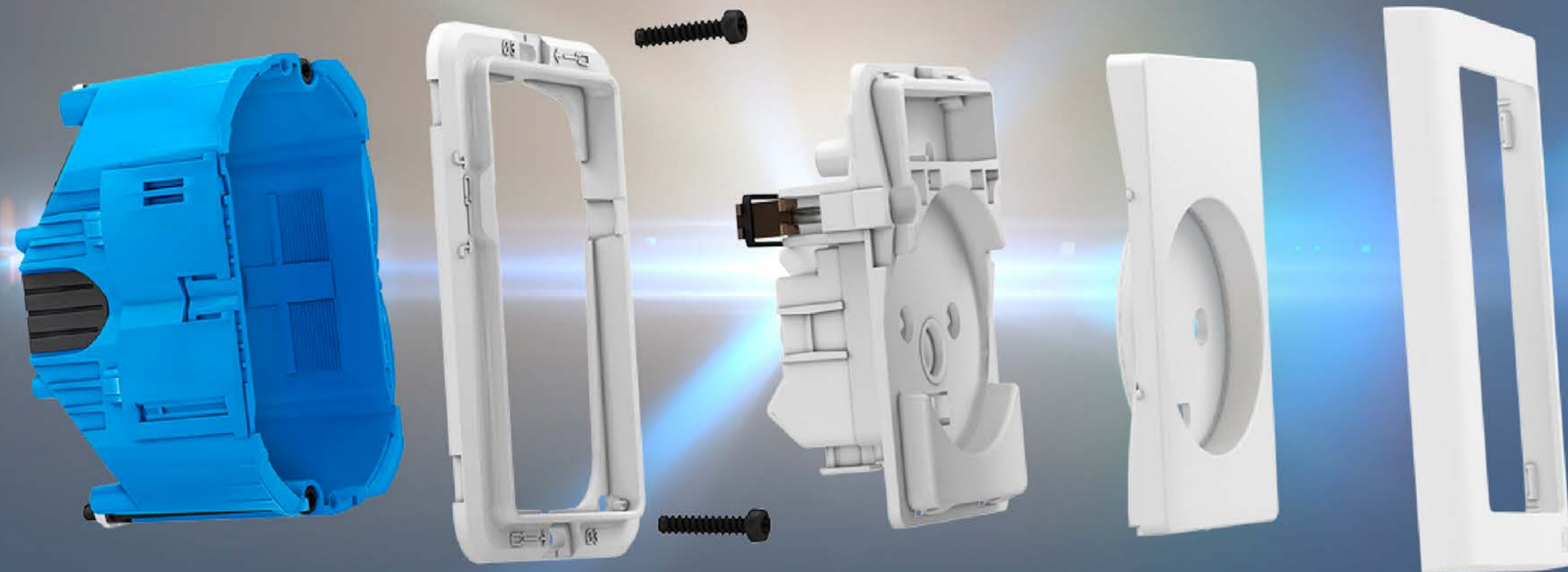
1. Installation box

2. Mounting frame

3. Insert

4. Rocker/cover

5. Design frame





LK FUGA®

## Cover designer

### Get customised symbols on the switch

Use the cover designer to help your customers print relevant symbols on LK FUGA® switches. Options are endless, as there are more than 100 different symbols to choose from. And with the upload function, you can create your own unique design for the room in question.

### Here's how



LK FUGA®

# Denmark's widest range

LK FUGA® has so many components and solutions, it's easy to deliver a one-stop solution for customers. Click around to see the many options...

## Features and inserts for all needs

- [Basic installation equipment](#)
- [Added functions](#)
- [Specialised solutions](#)
- [Communication and data outlets](#)

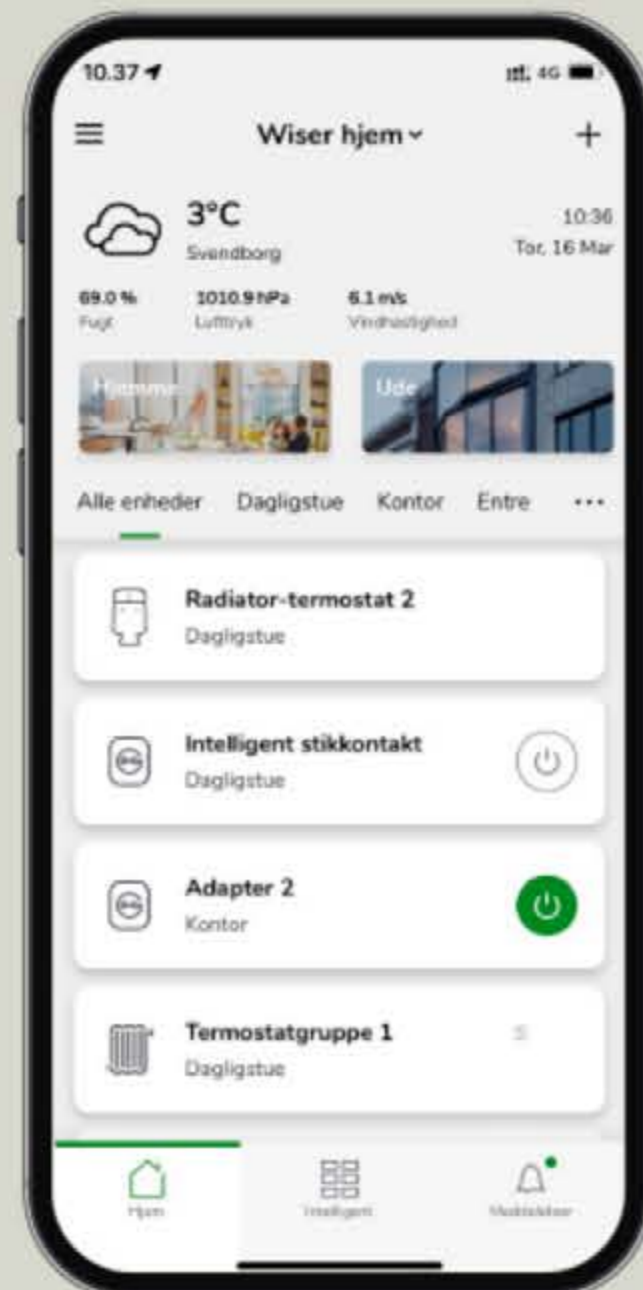


## Installation boxes for all types of walls and partitions



## 100% compatible with intelligent systems

- [Wiser™](#)
- [SpaceLogic KNX](#)



## Design frames – for every style and taste

- [BASELINE 50](#)
- [BASE 63](#)
- [SOFT](#)
- [CHOICE](#)
- [SLIM](#)



LK FUGA®

## Boxes for all types of walls

Our boxes have robust fastening options and optimized room inside to ensure a safe and stable installation. They are windproof (IP40) and meet the highest standards, so they can be used in e.g. low-energy houses. And they are all halogen-free.

[Read more about our boxes here](#)



**LK FUGA® AIR front mounted box**

The blue front mounted box with strong corner collars and robust assembly grooves makes installation easy, safe and durable.



**LK FUGA® AIR fire-resistant front mounted box**

The red, fire-resistant front, mounted box has built-in fire bricks that expand in the event to block the box. They comply with fire classifications EI30, EI60, EI90.



**LK FUGA® AIR In-wall box**

The green brick wall box includes extra screw holes and flexible grippers that make installation easy and durable. It provides a beautiful finish and is ideal for brick and solid walls.



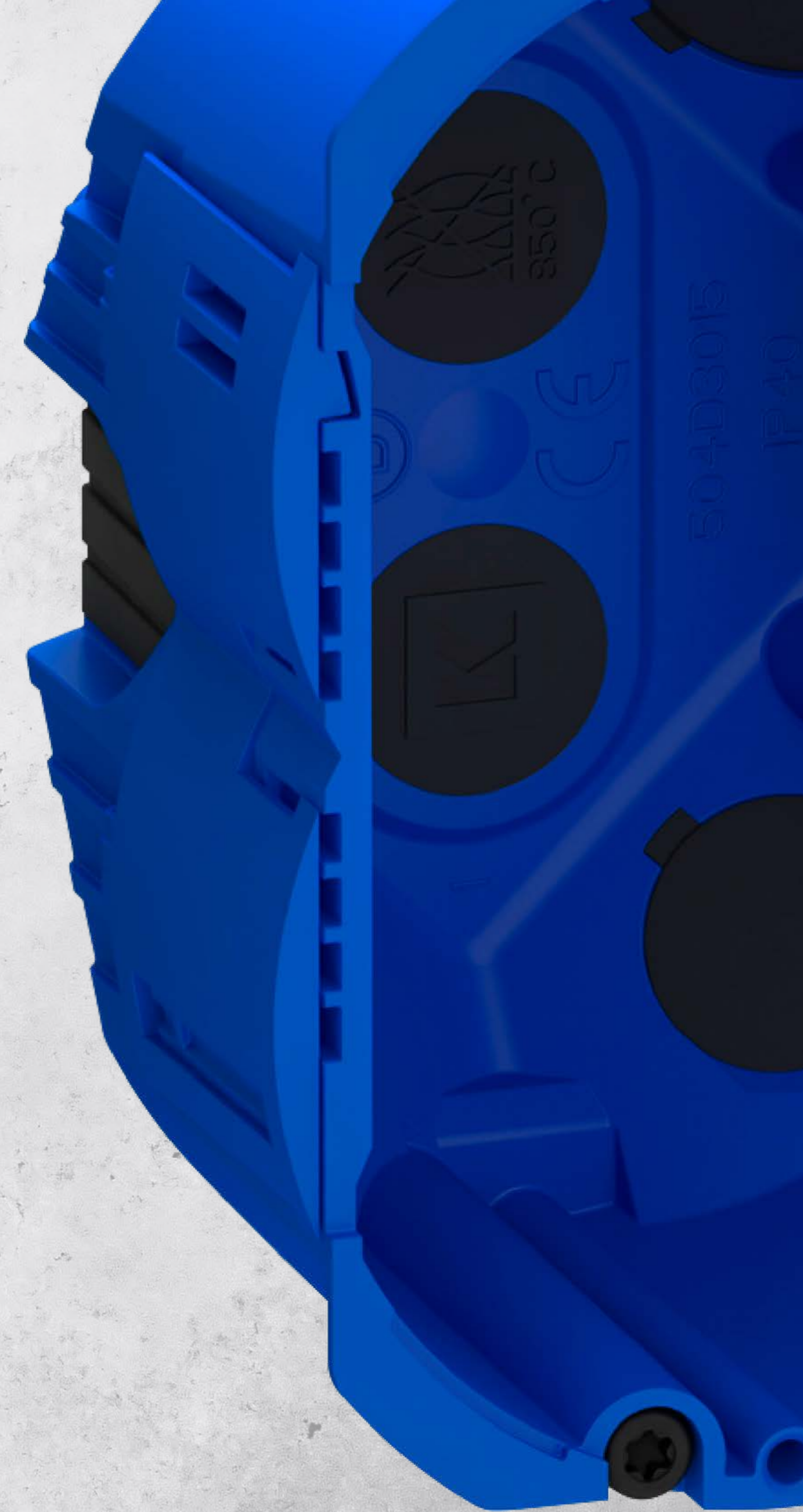
**LK FUGA® AIR Embedding box**

The yellow embedding box is specially designed for robust and reliable installation in concrete walls, where the lid and spouts ensure that no concrete enters the box.



**LK FUGA® AIR In-wall box**

The orange in-wall box is specially designed for the SLIM range, which requires an installation box that hides more of the installation inside the wall.



LK FUGA®

## The market's largest selection for basic installation

With 19 different switches, 31 different socket outlets in 3 different earthing systems and the original lamp socket outlets, LK FUGA® has set the standard in the market.

All our products fulfil the strictest requirements. Switches are made for 16A, socket outlets without a switch are 16A, while socket outlets with a switch can handle 10A. LK FUGA® products can therefore be used in all types of homes and buildings. See examples of the wide range here:



LK FUGA® Switches

LK FUGA® Socket outlets

LK FUGA® Light socket

# Functions and inserts for more comfort and less energy consumption

There are many ways to increase comfort and reduce energy consumption with the various LK FUGA® inserts and functions. And they can also replace existing functions without the need to run new cables or make extra holes in the wall. See here for examples:



**LK FUGA® USB chargers**  
Say goodbye to loose USB chargers

**LK FUGA® Timer socket outlet**  
Reduces energy consumption and increases security

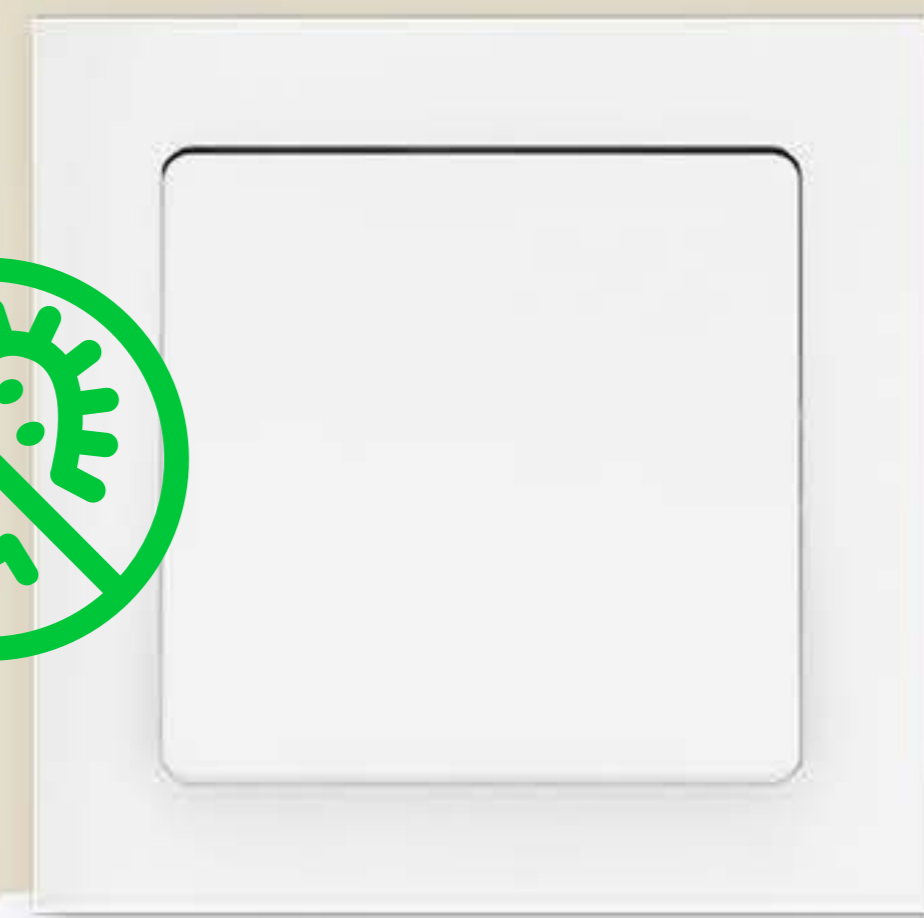
**LK FUGA® Light dimmers**  
Turn up the cosiness and turn down the energy consumption

**LK FUGA® PIR/movement sensors**  
Lights are only on when needed

LK FUGA®

## Specialised solutions for special needs

LK FUGA® offers several customised solutions  
for rooms and buildings with special needs.  
See here for examples:



### **LK FUGA® Antibacterial**

**Bactericidal surface when hygiene needs to be top notch**

An advanced antibacterial surface coating breaks down bacteria that come into contact with the switch. This minimises the potential spread of handborne viruses and bacteria.



### **LK FUGA® STRONG**

**Minimalist design – maximum protection**

Consists of a protective frame that withstands impact and external influences and an outer frame that "seals" the installation.

LK FUGA®

## Solutions for antenna and data installation

With LK FUGA® you ensure a stable infrastructure for data communication and antenna systems. Actassi is a data networking solution for the professional user. Actassi is compatible with LK FUGA® and regardless of network performance requirements and application choice, there is an Actassi solution that meets the needs of the user and the building – regardless of size. See here for examples:



LK FUGA® Actassi data outlet

LK FUGA® Antenna socket

# LK FUGA® is 100% compatible with the intelligent Wiser™ system

Wiser is a wireless system that can help make your home smart and energy efficient. Wiser offers a wide range of benefits. For example, it brings together most intelligent functions in one elegant solution. And Wiser fits into the LK FUGA® installation, making it easy to evolve your installation from wired to wireless and intelligent. It also eliminates the need to have several different smart home switches on the wall, ensuring the solution is also aesthetically pleasing. See a selection of the many possibilities with the Wiser range here:

[Read more about Wiser here](#)



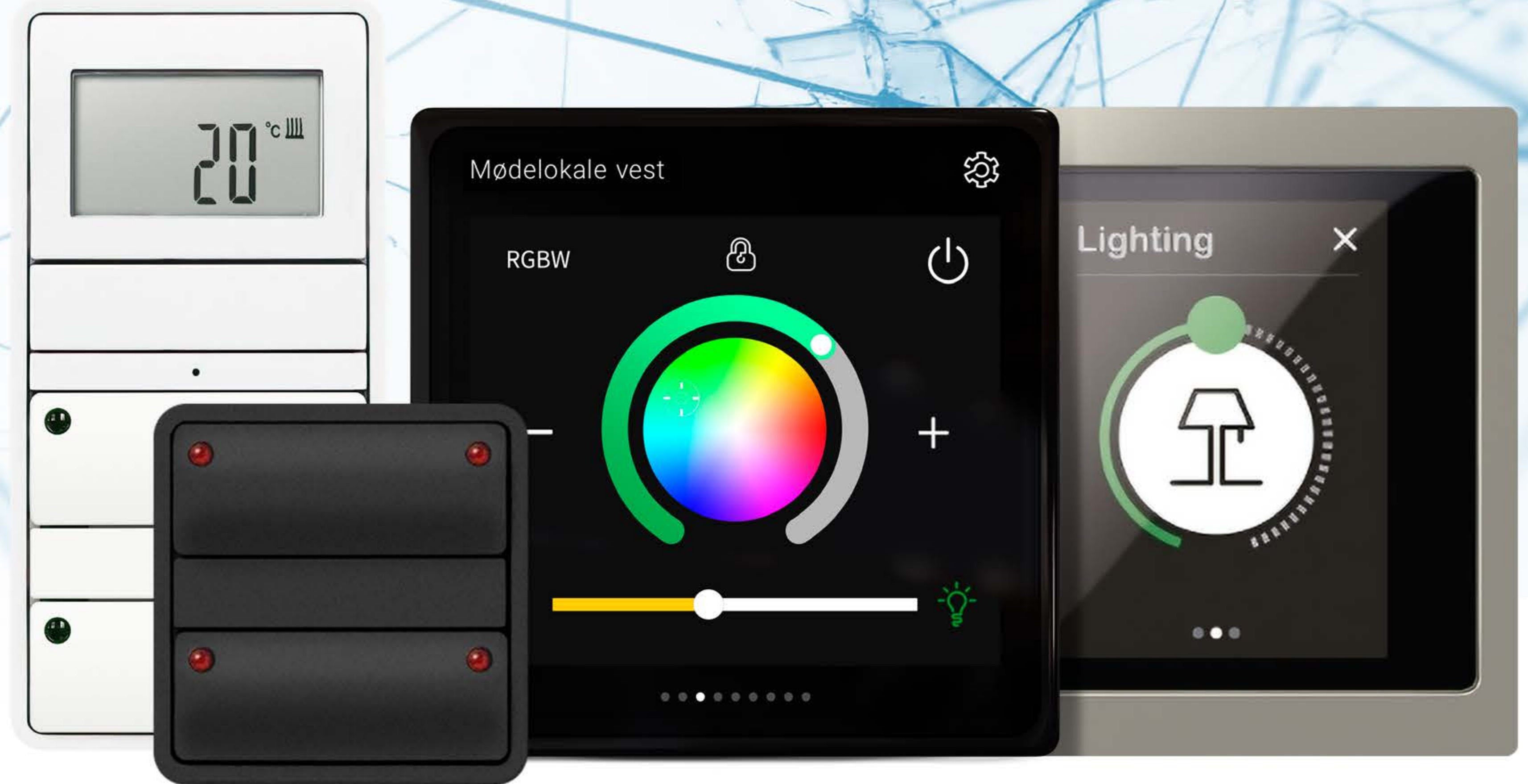


## LK FUGA®

# LK FUGA® is 100% compatible with the KNX system SpaceLogic for large buildings

KNX is the international standard for intelligent building automation in large buildings. It can solve all kinds of control and automation tasks to optimise comfort and energy management. Our KNX system is called SpaceLogic®, an optimised, easy and flexible system to work with. And it fits directly into an LK FUGA® installation, making it easy to connect a more classic installation with an intelligent one. It also eliminates the need to have several different types of switches on the wall, so the solution also looks good. See a selection of our SpaceLogic KNX range on this page.

[Read more about SpaceLogic KNX here](#)



LK FUGA® SL KNX Operating pressure

SL KNX Multitouch pro

SL KNX Touch display

LK FUGA®

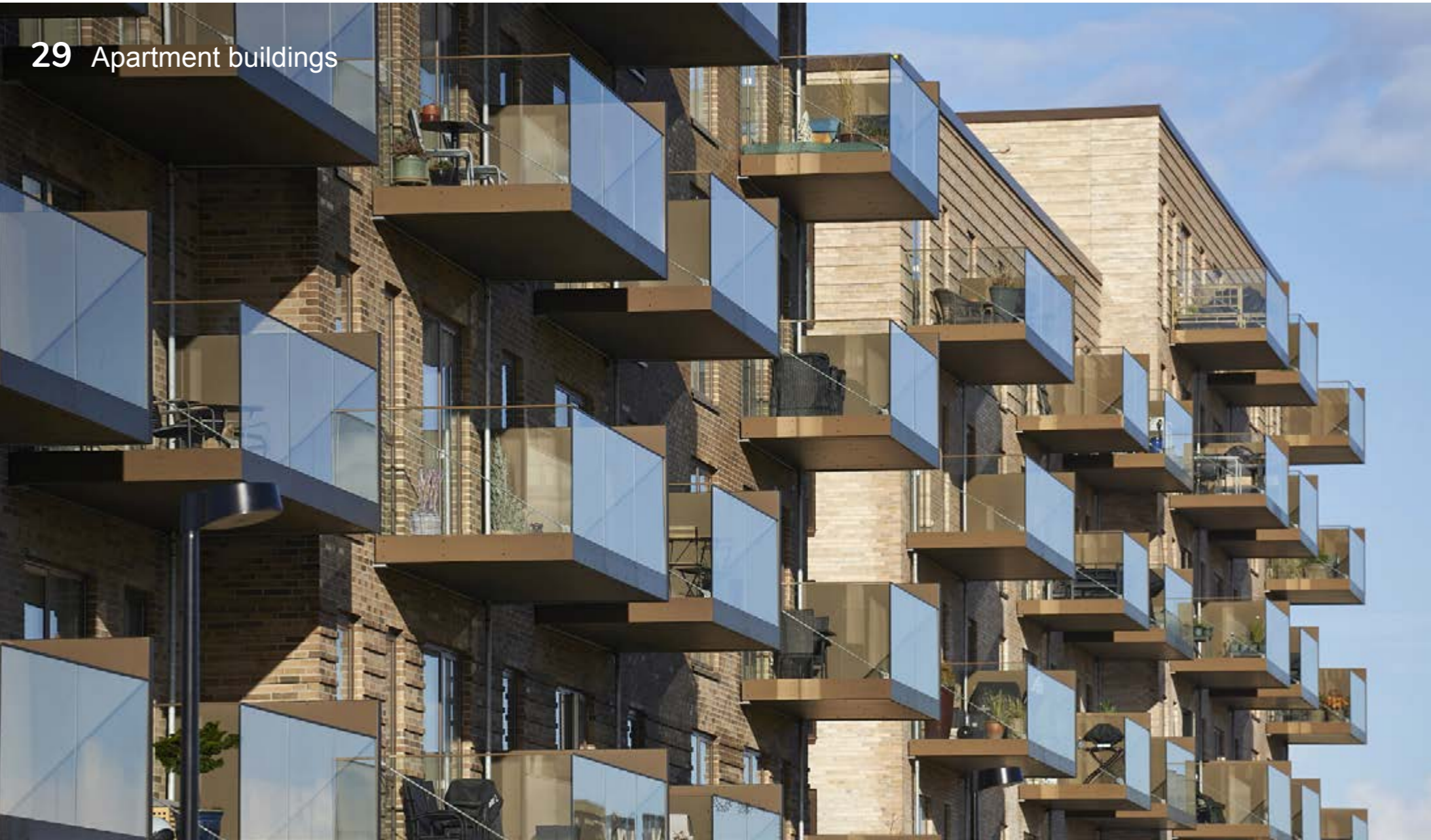
# Solutions for any building

LK FUGA® offers a superior range that matches requirements for electrical installations whether new build or renovation – now and in the future.

- 27 Single-family houses
- 29 Apartment buildings
- 31 Office buildings
- 33 Hospitals
- 35 Retail, cafés and restaurants
- 37 Institutioner og sportshaller
- 39 Hotels



27 Single-family houses



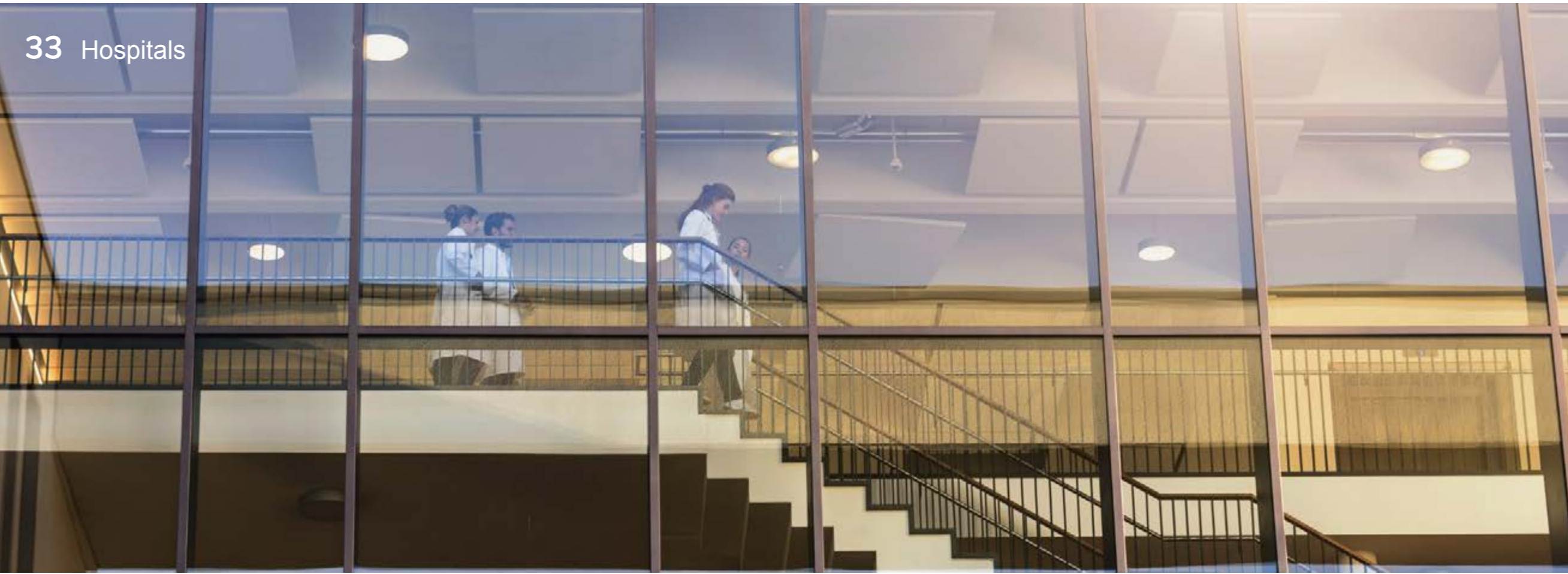
29 Apartment buildings



37 Institutions and sports centres



31 Office buildings



33 Hospitals



39 Hotels



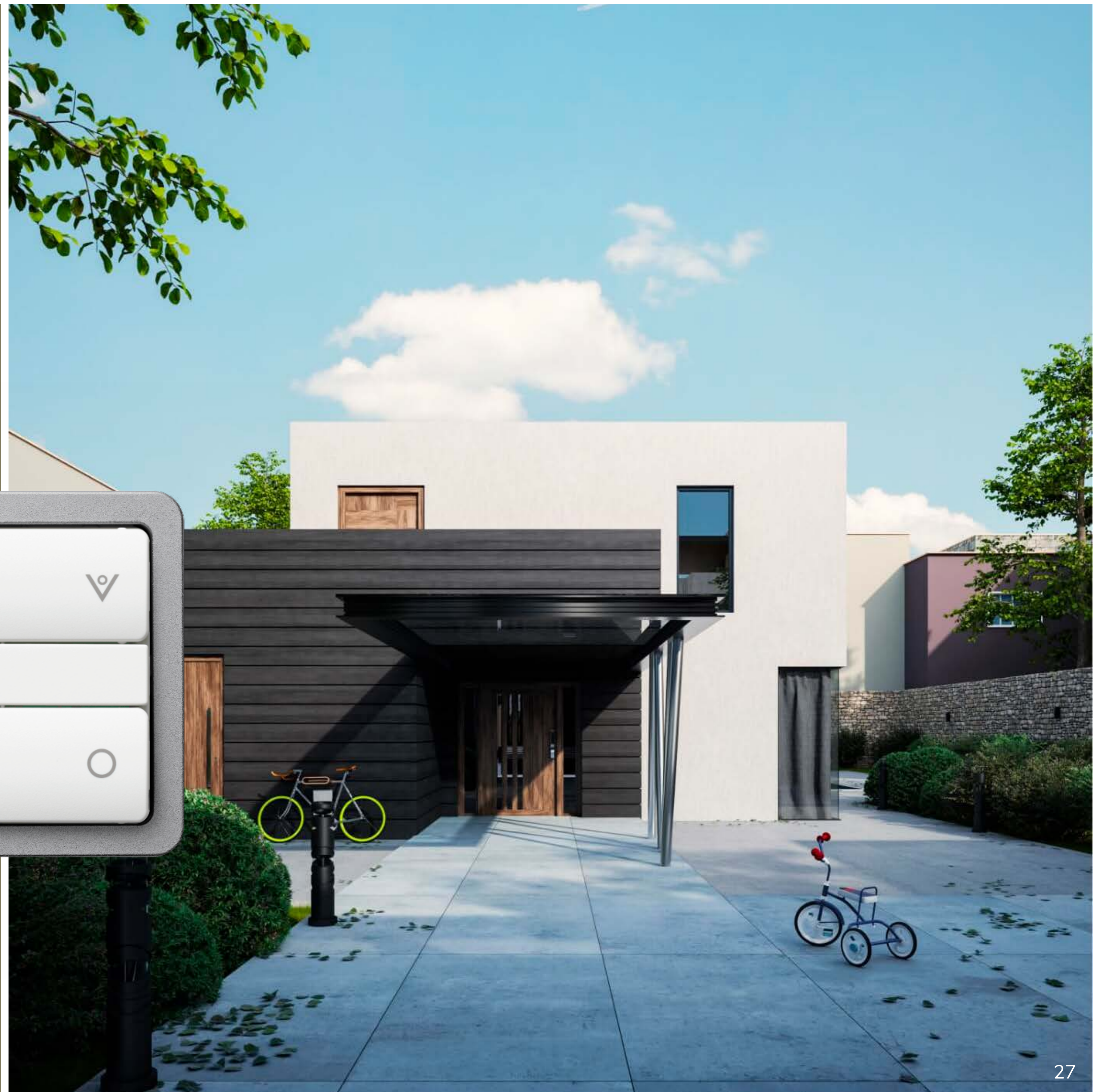
35 Retail, cafés and restaurants

LK FUGA®

An elegant and future-proof  
solution for single-family homes



LK FUGA® Wiser  
free located switch white  
with SLIM steel frame



LK FUGA®

## It's easy to match tastes and needs with LK FUGA®

### LK FUGA®:

- ✓ Makes it easy to select and upgrade features to match customer needs.
- ✓ Makes it easy to select and change frame designs to match customer tastes.
- ✓ Makes it easy to make your installation smarter and more energy efficient with the smart **Wiser™ system**.
- ✓ Create customised symbols on switches with **Cover Designer**.
- ✓ Easily accessible **Environmental documentation** in our app and on the website.

LK FUGA® The six design ranges – matching any style.



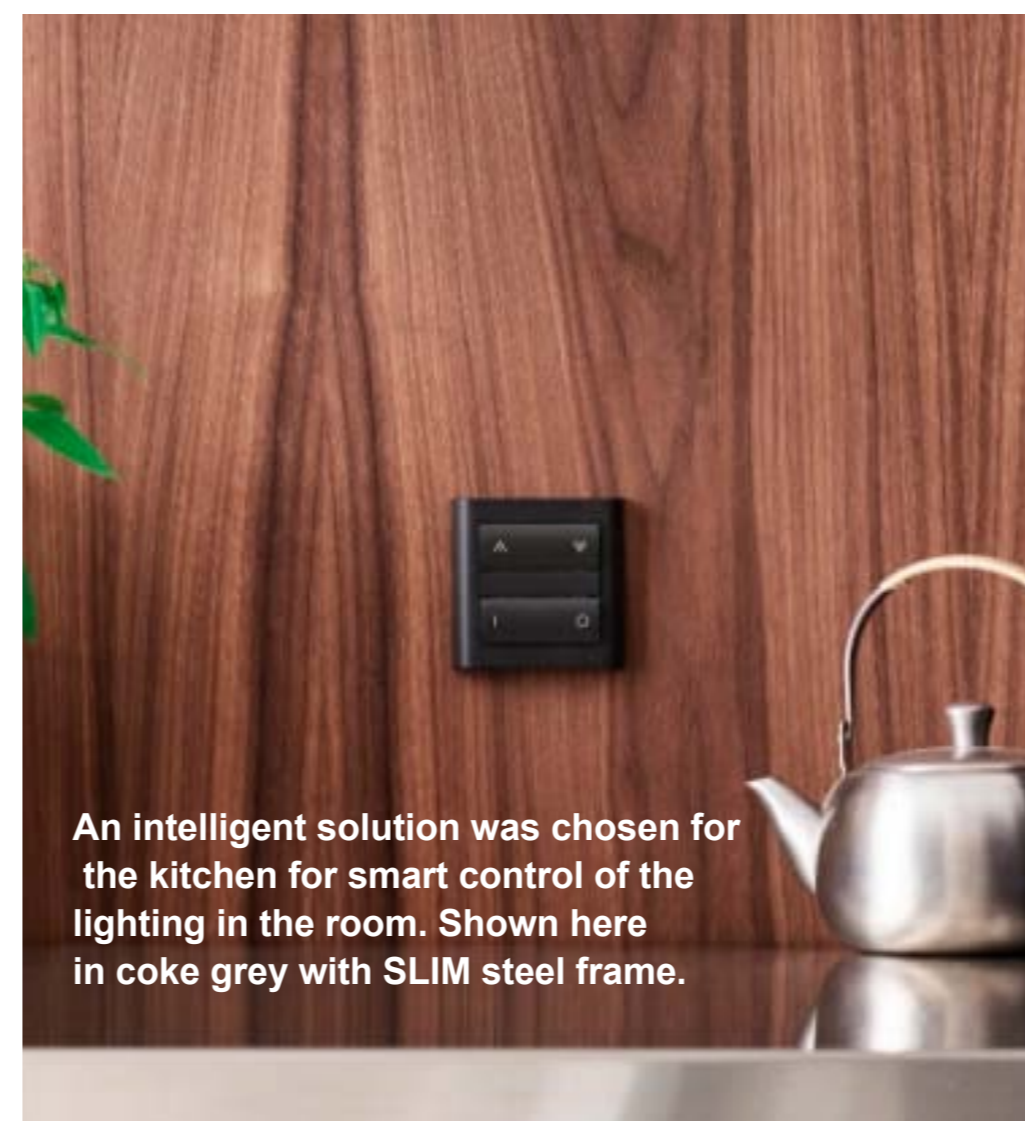
Life Is On | Schneider Electric



For the bedroom, an LK FUGA® Plug-in socket outlet with USB charger in coke grey with PURE steel frame.



In the children's room, a white LK FUGA® Dimmer with a blue CHOICE frame has been chosen to match the colour of the cot.



An intelligent solution was chosen for the kitchen for smart control of the lighting in the room. Shown here in coke grey with SLIM steel frame.



This home in Hellerup has been completely renovated – including the electrical installation. Various different LK FUGA® solutions have been chosen to match the look and function of each room. Wiser™ has also been installed in some of the rooms for a smarter and more energy-efficient solution.

LK FUGA®

# A total solution for apartment buildings



LK FUGA® PIR  
in white with SOFT frame



LK FUGA®

# It's easy to match tastes and needs with LK FUGA®

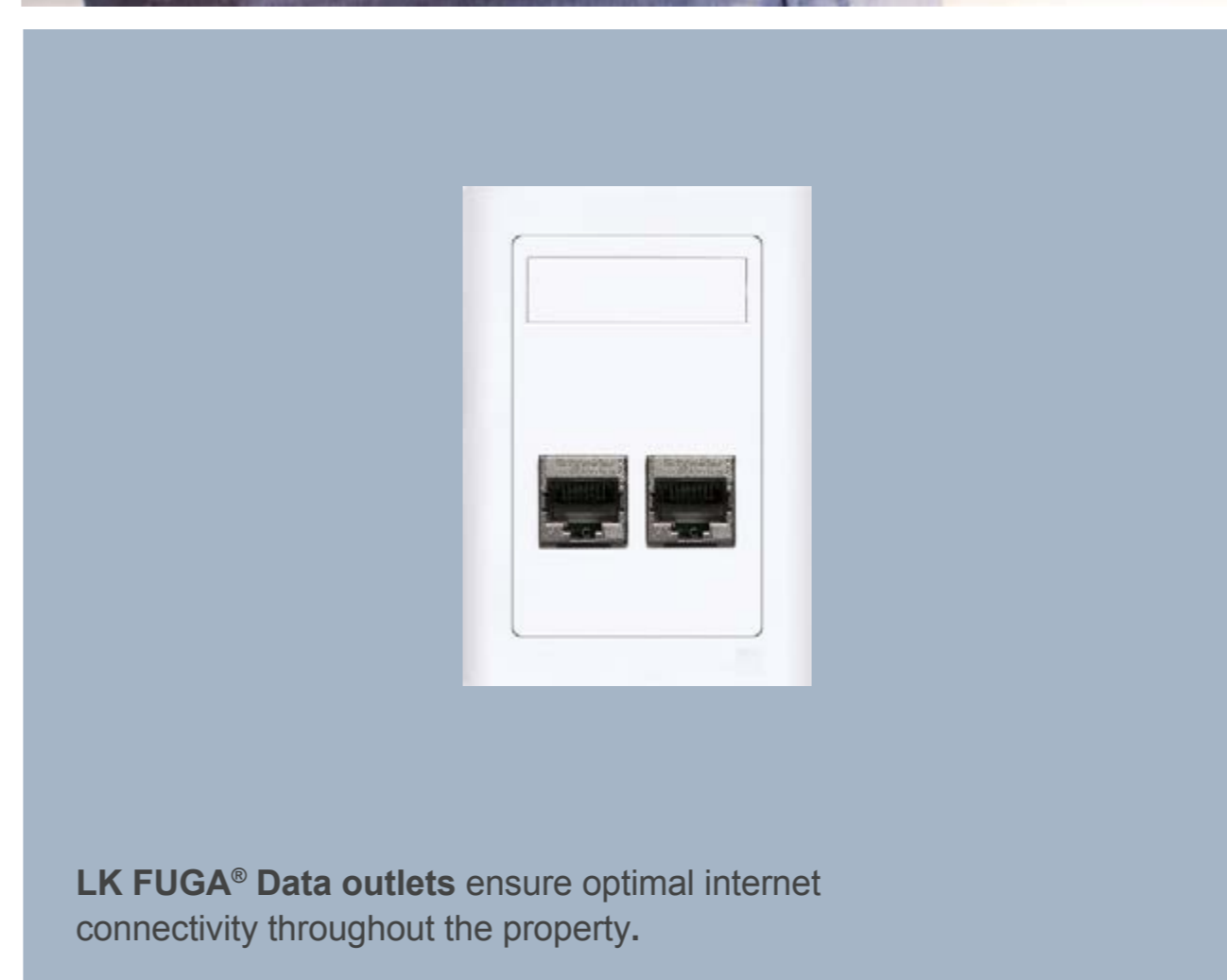
## LK FUGA® offers:

- ✓ A total solution for homes and public areas with the most proven installation materials on the market.
- ✓ Wide range of everything from a basic installation to smarter and intelligent solutions.
- ✓ Design frames for different styles and themes in the home.
- ✓ Available **Environmental documentation** in our app and on the website.
- ✓ Customisable symbols with **Cover Designer**.

LK FUGA® The six design ranges – matching any style.



Life Is On | **Schneider**  
Electric



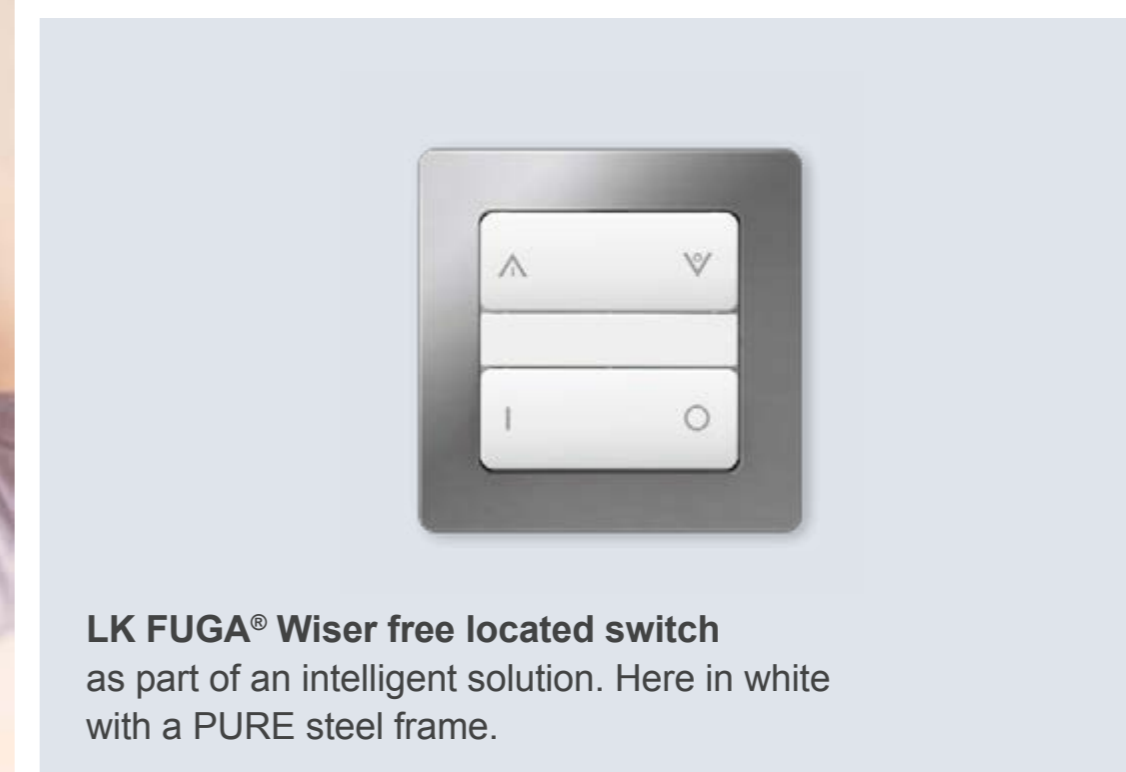
LK FUGA® Data outlets ensure optimal internet connectivity throughout the property.



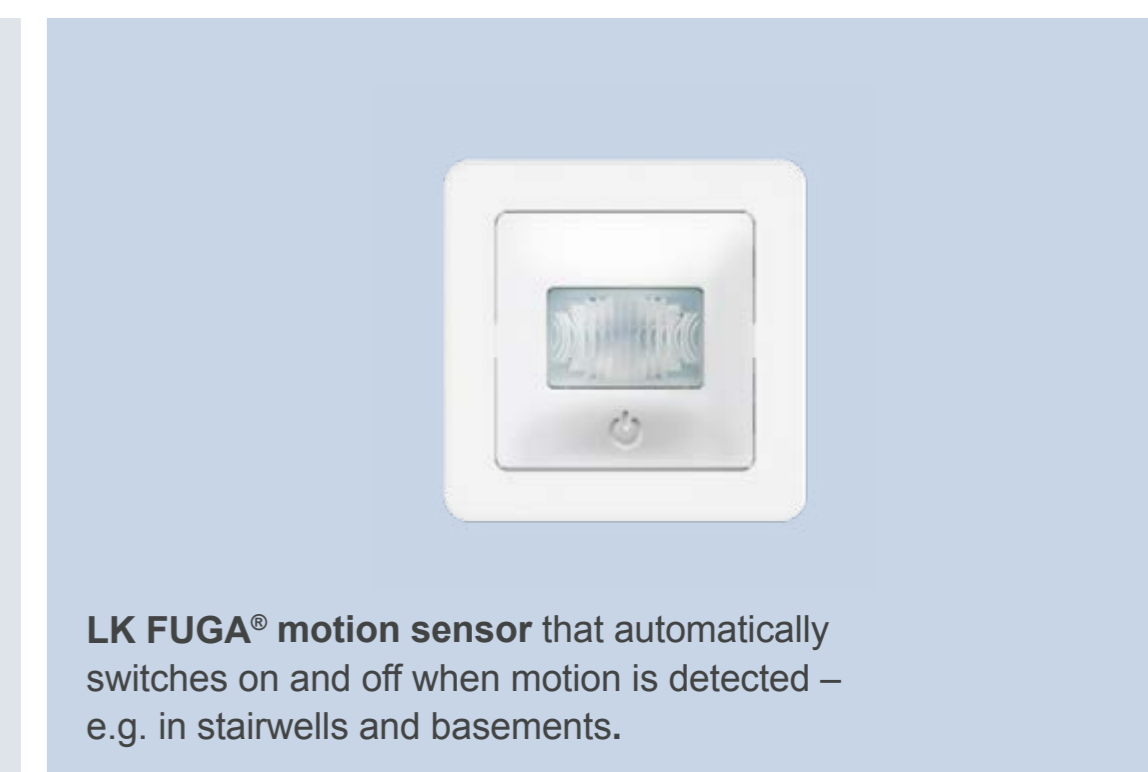
LK FUGA® socket outlet with USB-C  
Here in coke grey with SLIM steel frame.



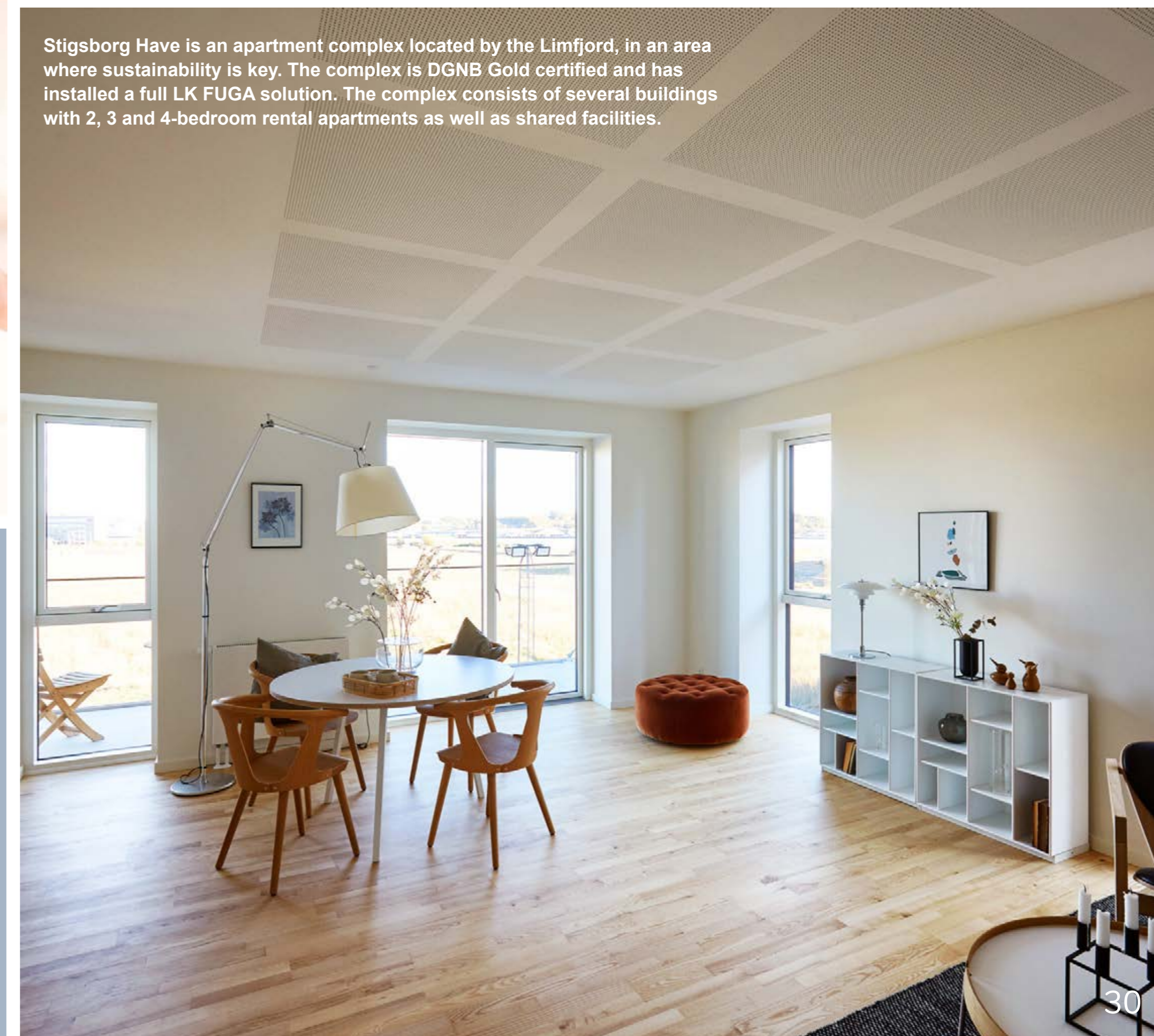
LK FUGA® dimmer for the dining table for the right atmosphere. White insert with white SOFT frame.



LK FUGA® Wiser free located switch as part of an intelligent solution. Here in white with a PURE steel frame.



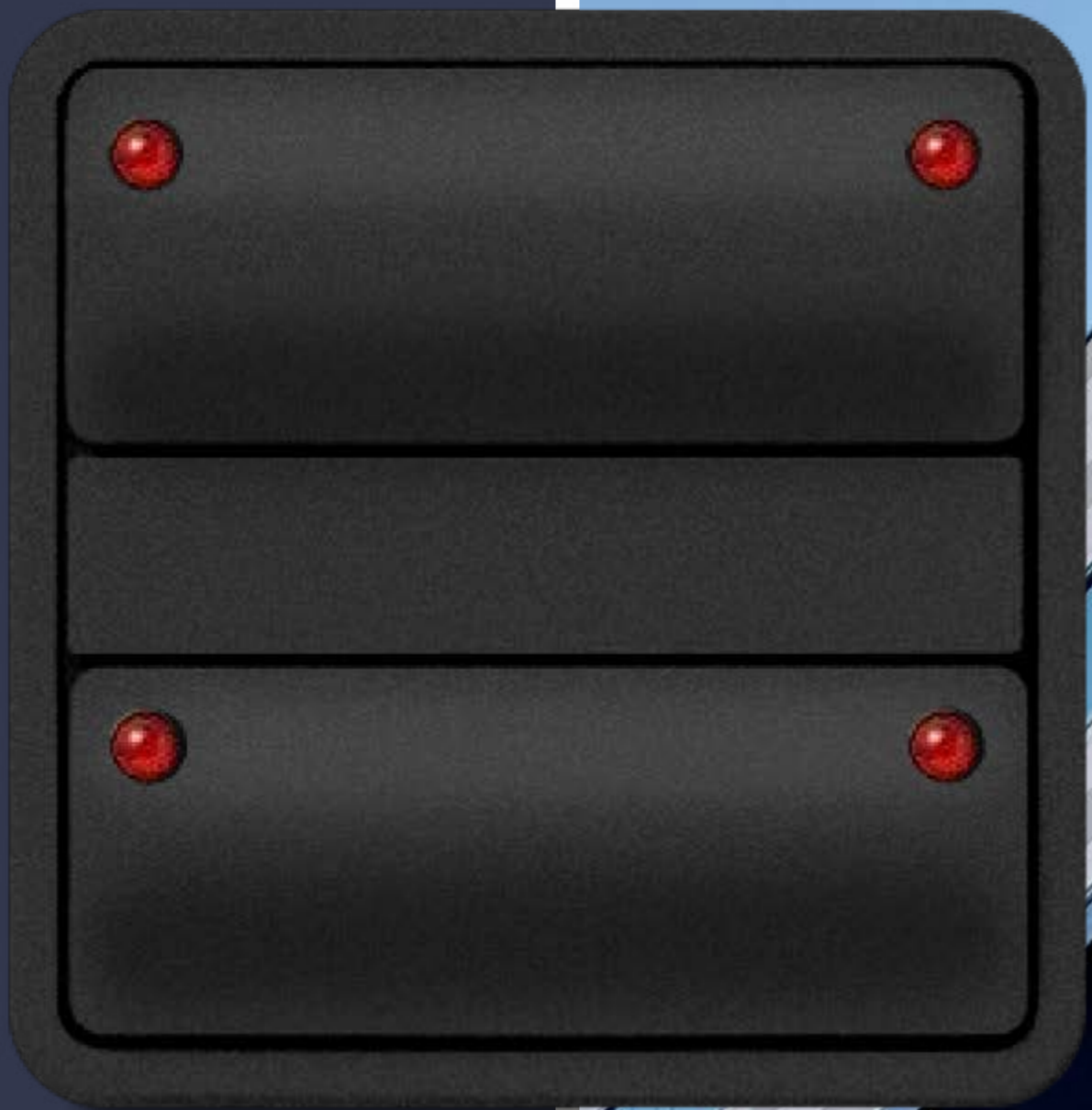
LK FUGA® motion sensor that automatically switches on and off when motion is detected – e.g. in stairwells and basements.



Stigsborg Have is an apartment complex located by the Limfjord, in an area where sustainability is key. The complex is DGNB Gold certified and has installed a full LK FUGA solution. The complex consists of several buildings with 2, 3 and 4-bedroom rental apartments as well as shared facilities.

LK FUGA®

For all types of office buildings



LK FUGA® KNX SL  
Control push button in  
coke grey with SLIM frame.



LK FUGA®

# When design, functionality and a good working environment go hand in hand

## LK FUGA® offers:

- ✓ A complete solution for the office where everything is designed to work together.
- ✓ Everything from basic functions to automated and intelligent control systems for more comfort and energy optimisation in the building.
- ✓ The most proven switch range on the market with available **Environmental documentation** in our app and on the website.
- ✓ Option for customised symbols with **Cover Designer**.



LK FUGA® KNX relay with display as part of an intelligent solution for automatic control of lighting, heating and indoor climate. Shown here in coke grey with SOFT frame.



LK FUGA® data outlet in white – BASE 63 frame.



LK FUGA® PIR 160° Motion sensor for e.g. basements, toilets and kitchenettes where it's convenient for lights to switch on and off automatically. Here in white with BASE 63 frame.



The advertising agency in Copenhagen has a full LK FUGA® solution installed in their office with basic solutions and more advanced features.



The CLIC'LINE® that LK FUGA® fits into is also part of the installation at the office, where socket outlets, data outlets, etc. sit side by side. Located at workstations, in meeting rooms and other places where it makes sense to consolidate the installation.



LK FUGA®

A safe and reliable solution  
for the hospital



LK FUGA®  
with Antibacterial surface  
in white with BASE 63 frame.



LK FUGA®

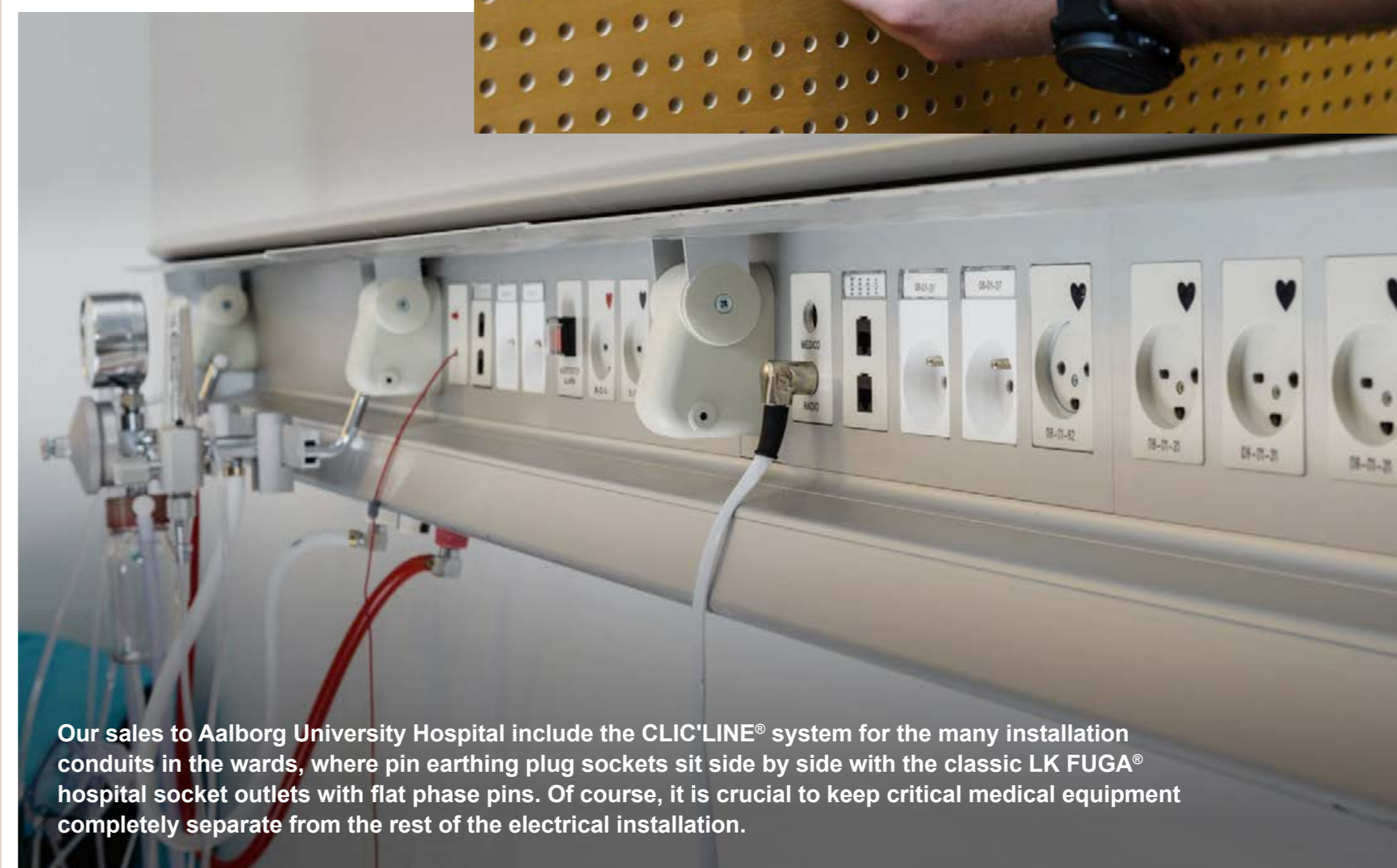
# Safe and functional customised solutions

## LK FUGA® offers:

- ✓ Customised solutions that meet the needs of the building, staff and patients.
- ✓ Automated and intelligent solutions that increase comfort and energy optimisation in the building.
- ✓ Easy-to-clean design and antibacterial surface option for optimal hygiene.
- ✓ The most proven and reliable installation equipment on the market.
- ✓ Available **Environmental documentation** in our app and on the website.
- ✓ Customisable symbols with **Cover Designer**.



In recent years, Aalborg University Hospital has installed more than 6,000 LK FUGA® socket outlets with pin earthing, and there are several reasons for doing so: They are very easy to clean and patients appreciate that they can also be used to charge mobile phones and tablets.



Our sales to Aalborg University Hospital include the CLIC'LINE® system for the many installation conduits in the wards, where pin earthing plug sockets sit side by side with the classic LK FUGA® hospital socket outlets with flat phase pins. Of course, it is crucial to keep critical medical equipment completely separate from the rest of the electrical installation.



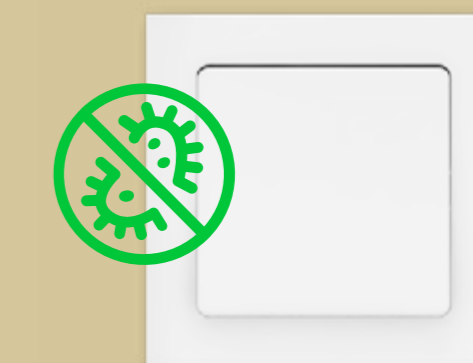
LK FUGA® PIR 160° motion sensor, that automatically switches lights on and off when motion is detected. Smart for e.g. toilets, basements, wardrobes, etc. where it is easy to forget to switch off or where hygiene is a priority.



LK FUGA® STRONG with extra tough frame to protect the installation should it be hit by a hospital bed, for example.

The specially designed LK FUGA® 3 x LK FUGA® socket outlets with hospital plug with a flat nose pin that ensures that only hospital equipment can be connected.

a choice of three different earthing systems:



LK FUGA® Antibak has an advanced coating that prevents bacteria from surviving on the switch, which reduces the risk of infection.



LK FUGA® Pull Switch makes it easy for patients to contact staff.

LK FUGA®

A reliable and elegant solution for  
retail, café and restaurants



LK FUGA® socket outlet  
with USB C charger  
in coke grey with PURE frame



LK FUGA®

## Designed to be used

### LK FUGA® offers:

- ✓ A reliable solution with the most proven installation hardware on the market.
- ✓ A wide range of features to match the needs of both customers and staff.
- ✓ Design options and colours to match the style and needs of retail spaces, restaurants, kitchens, warehouses and more.
- ✓ An easy-to-clean design for better hygiene.
- ✓ Create customised symbols on switches with [Cover Designer](#).
- ✓ Easily accessible [Environmental documentation](#) in our app and on the website.

LK FUGA® The six design ranges – matching any style.



BASELINE 50



SLIM



BASE 63



SOFT



PURE



CHOICE



LK FUGA® PIR 160° Motion Sensor for e.g. toilets, warehouses and other rooms where it is practical – and energy efficient – to have the light switch on and off automatically. Here in white with BASE 63 frame.



LK FUGA® KNX SpaceLogic relay – provides a smart solution for controlling e.g. lighting in the premises .



LK FUGA® dual USB plug and LK FUGA® socket outlets with USB. Great service for guests when mobiles, computers, etc. need charging.



LK FUGA® Socket outlet with pin earth, that protects connected instruments and tools that are used frequently and for a long time. Shown here in coke grey with BASE 63 frame.

LK FUGA®

Robust and safe solutions for institutions and sports centres



LK FUGA® socket outlet in STRONG frame

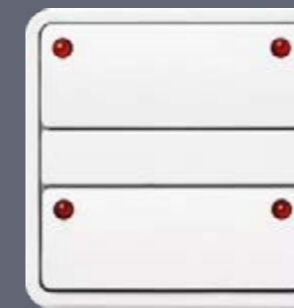


LK FUGA®

## For high activity levels and exposed environments

### LK FUGA® offers:

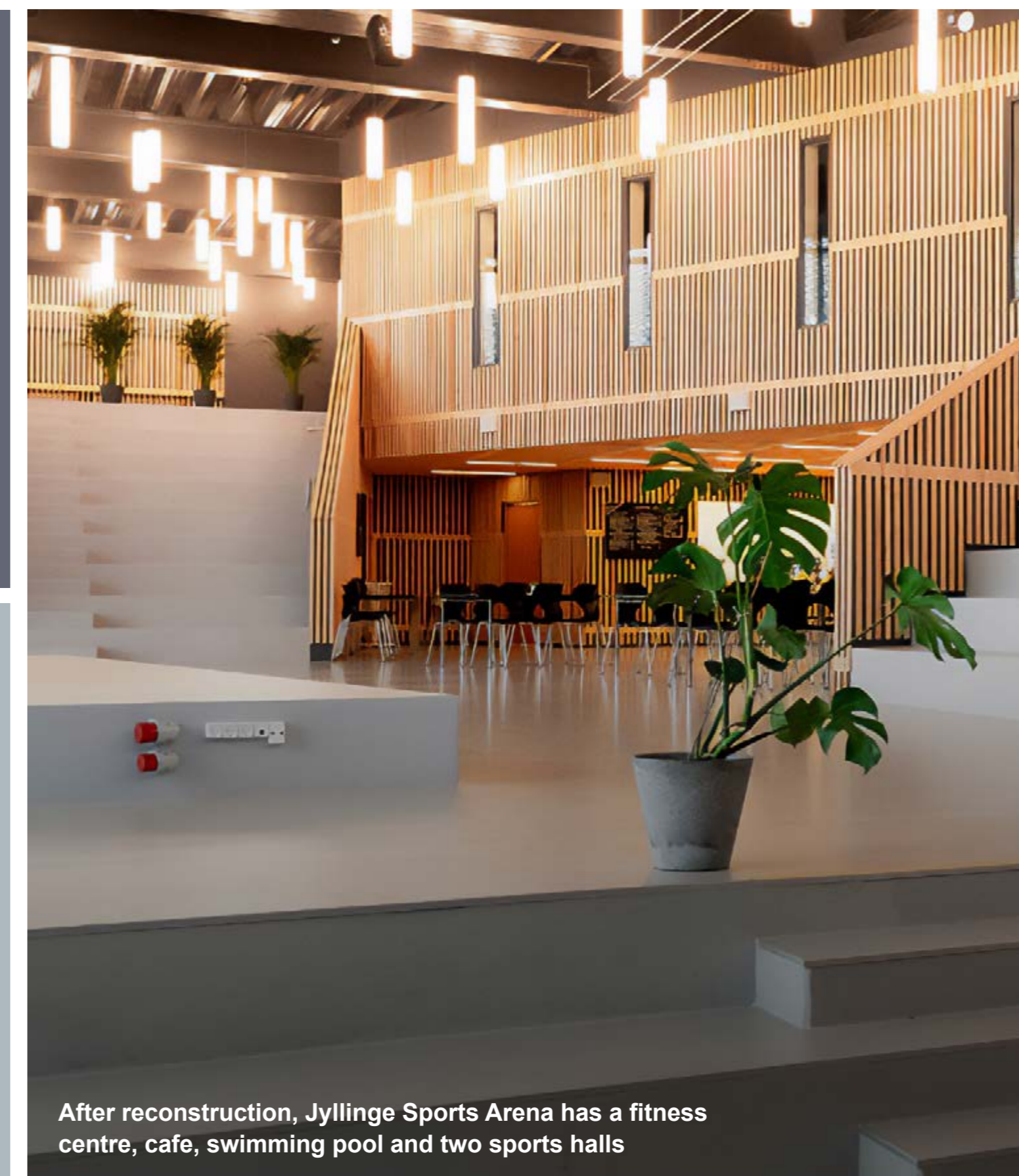
- ✓ Robust speciality products for exposed environments such as sports halls and schools.
- ✓ Easy-to-clean design, also available with antibacterial surface for optimal hygiene, e.g. for daycare centres and nursing homes.
- ✓ Automated and intelligent solutions that reduce energy consumption and increase comfort.
- ✓ A reliable solution and the most proven switch range on the market.
- ✓ Available [Environmental documentation](#) in our app and on the website.



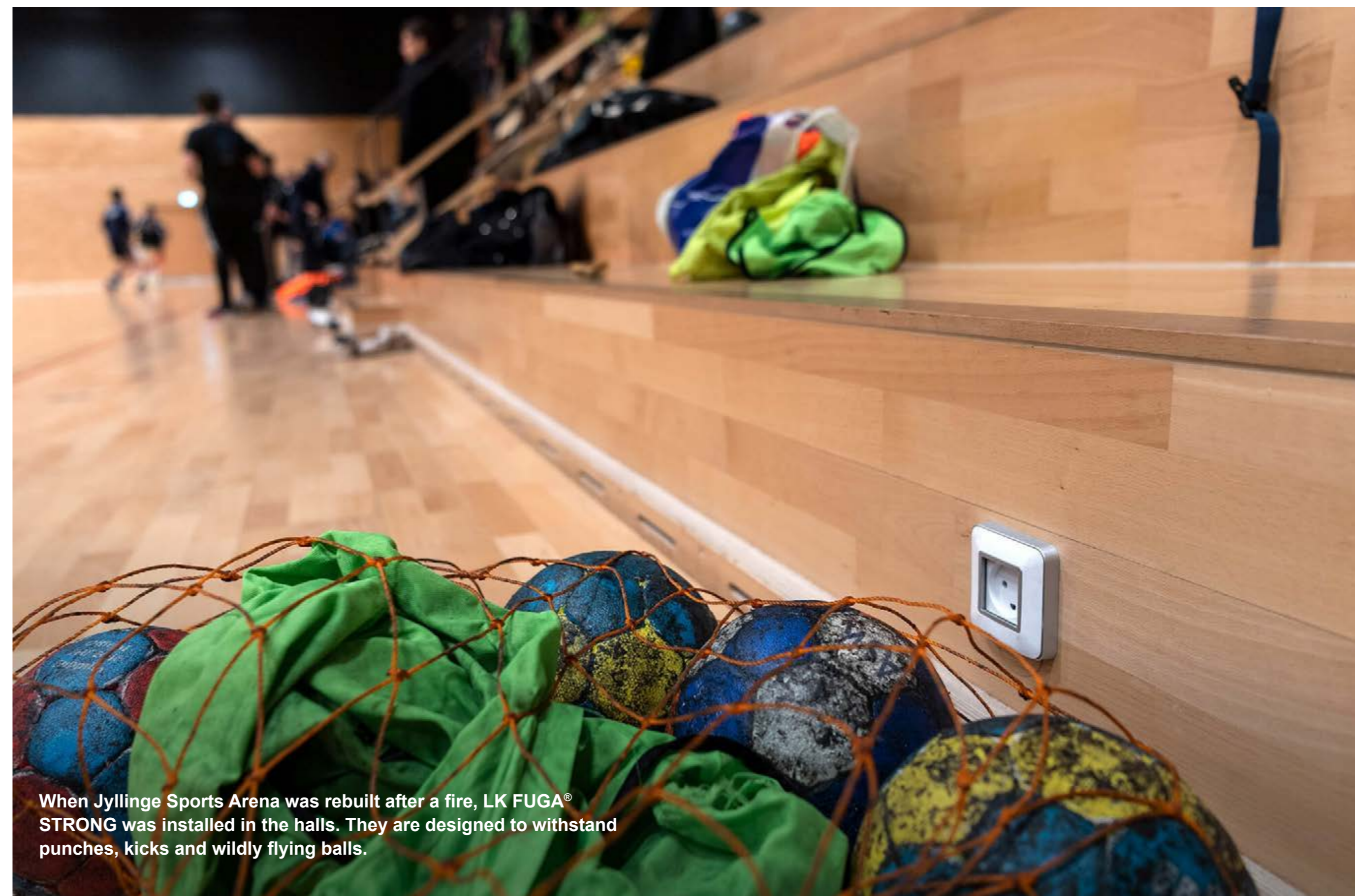
**LK FUGA® KNX control push button**  
Smart for larger common rooms in schools, nursing homes, etc. for more efficient control of light and indoor climate, among other things.



**LK FUGA® USB Double charger A+C**  
Suitable for public areas to make it easy for users to charge mobiles, computers, etc.



After reconstruction, Jyllinge Sports Arena has a fitness centre, cafe, swimming pool and two sports halls



When Jyllinge Sports Arena was rebuilt after a fire, LK FUGA® STRONG was installed in the halls. They are designed to withstand punches, kicks and wildly flying balls.



The LK FUGA® PIR 160° motion sensor, which switches lights on and off automatically, is practical and energy-saving in e.g. toilets, corridors and storage rooms – and mounted with a STRONG frame also in the sports hall.



LK FUGA® Antibak has an advanced coating that prevents bacteria from surviving on the switch. This reduces the risk of infection.

LK FUGA®

A Danish design icon for hotels



LK FUGA® key card switch in coke grey with PURE steel frame.



LK FUGA®

## It's the details that count

### LK FUGA® offers:

- ✓ A Danish design icon developed by Jørgen Juul in 1981.
- ✓ A wide range of features and customised solutions that match the comfort and energy efficiency needs of the different types of rooms and spaces in the building.
- ✓ Easy-to-clean design and antibacterial surface option for optimal hygiene.
- ✓ Option of customised symbols on the switches with **Cover Designer**.
- ✓ Available **Environmental documentation** in our app and on the website.
- ✓ The most proven switch ranges on the market.

LK FUGA® The six design ranges – matching any style.



Life Is On | Schneider Electric



LK FUGA® dimmer with SLIM frame in anthracite – e.g. for rooms to create the right cosy atmosphere.



LK FUGA® key card switch for rooms – shown here in coke grey with PURE steel frame.



LK FUGA® KNX control push button Smart for meeting rooms, cafés and restaurants, for controlling lighting and indoor climate, among other things. Shown here in coke grey with PURE frame for an exclusive look.



Alsik Hotel & Spa in Sønderborg is one of Denmark's most exciting hotels. Alsik prefers a classic and exclusive Nordic design and more sustainable construction, and is part of Sønderborg's vision to be carbon neutral by 2029. The hotel has LK FUGA® solutions throughout, where Danish design, smart and energy-efficient features and local Danish production played a role in the choice of supplier.

LK FUGA® PIR 160° Motion Sensor e.g. for toilets and stairwells where it's convenient to have lights switch on and off automatically. Shown here in anthracite with BASE 63 design frame.



LK FUGA® socket outlet and 2 x USB charger full charging options for common areas so guests can easily charge mobiles, tablets and other devices. Shown here in white with SLIM steel frame.



LK FUGA® socket outlet with USB-C for the rooms – at a desk or bedside table.





Get in touch with us if  
you have any questions

**See more at lk.dk**

Schneider Electric Danmark A/S  
Lautrupvang 1  
DK-2750 Ballerup

CRN (CVR): 70698714  
Telephone: 35 15 90 00



## Schneider Electric makes a difference

The international research magazine **Corporate Knights**, which publishes an annual list of the world's most sustainable companies, has had Schneider at the top of the list for many years.

[Read more](#)